

SEND POLICY

Date completed:	September 2022
Completed By:	Geraldine Daly Lucy Wallis SENCo from January 2023
Signed:	
Review Date:	September 2023

Introduction:

This policy is constructed in line with the requirements set out in Part 3 of the Pupils and Families Bill (2014) and associated regulations.

The policy is fully compliant with the Special Educational Needs (SEN) Code of Practice: for 0 to 25 years.

Part 1 : Basic information about the school's SEND provision South Kilworth C of E Primary School identifies pupils as having Special Educational Needs if they meet the definition as set out in the Special Educational Needs (SEN) Code of Practice (DfE, 2015).

This defines SEND as:

- A child or young person has SEN if they have a learning difficulty or disability which calls for special educational provision to be made for him or her.
- A child of compulsory school age or a young person has a learning difficulty or disability if he or she:
 - has a significantly greater difficulty in learning than the majority of others of the same age, or
 - has a disability which prevents or hinders him or her from making use of educational facilities of a kind generally provided for others of the same age in mainstream schools or mainstream post-16 institutions
- Many children and young people who have SEN may have a disability under the Equality Act 2010 – that is ‘...a physical or mental impairment which has a long term and substantial adverse effect on their ability to carry out normal day-to-day activities’. (Introduction)

The school provides special educational provision for pupils who require “special educational provision, that is provision different from or additional to that normally available to pupils of the same age.” Page 15.

The school provides for pupils whose special educational needs broadly fall into the 4 areas of:

1. Communication and interaction
2. Cognition and learning
3. Social, emotional and mental health difficulties
4. Sensory and/or physical needs

Guiding principles At South Kilworth C of E Primary School we believe that all of our pupils, regardless of gender, ethnicity, ability, disability or sexuality are entitled to a high-quality education that will maximise their life chances.

All pupils are entitled to an education that enables them to:

- achieve their best
 - become confident individuals living fulfilling lives, and
 - make a successful transition into adulthood, whether into employment, further or higher education or training
- Objectives of the school's SEND policy We will ensure that a child or young person with SEND will have their needs met through a rigorous programme of identification, assessment, planning and support.

To achieve this:

- the views of the pupil will be sought and taken into account
- our parents have a vital role to play in supporting their pupil's education
- our pupils with SEND will be offered full access to a broad, balanced and relevant education, including an appropriate curriculum
- The school will manage its resources to ensure all pupils' needs are met
- A pupil's special educational needs will be identified early
- Provision and progress for our SEND pupils will be monitored and reviewed regularly
- The school will involve outside agencies when appropriate
- Education, Health & Care Plans and existing statements will be reviewed regularly in line with regulations
- Appropriate training will be provided for those involved in the implementation of the policy

Where a SEND is identified, the school will put appropriate interventions in place. These will be provided as part of a Graduated Response, which includes regular review of the progress made and adaptations to the support provided as required.

How the policy will contribute to meeting the objectives:

The effectiveness and appropriateness of the policy will be monitored by the Special Educational Needs Coordinator (SENCO) in conjunction with the SEND Representative from the Governing Body.

The use of resources, identification, programme planning, effectiveness and quality of individual planning, pupil progress, pupil participation, parents as partners, statutory reviews, referrals for statutory assessment, the identification of training needs and the use made of support services will be monitored and evaluated regularly. In addition, the school will annually undertake a self-evaluation of the effectiveness of its policy in order to both update the policy and to plan further improvements and development.

The arrangements that have been made for coordinating the provision of education for pupils with SEND at the school.

The school's provision for pupils with SEND will be coordinated by Lucy Wallis (the SENCO for the school). The SENCO has an important role to play with the head teacher and governing body, in determining the strategic development of SEND policy and provision in the school. At South Kilworth C of E Primary School the SENCO is part of the school leadership team.

The SENCO has day-to-day responsibility for the operation of SEND policy and coordination of specific provision made to support individual pupils with SEND, including those who have EHC plans. The SENCO provides professional guidance to colleagues and works closely with staff, parents and carers, and other agencies. The SENCO is aware of the provision in the Local Offer and is able to work with professionals providing a support role to the family to ensure that pupils with SEND receive appropriate support and high quality teaching.

The key responsibilities of the SENCO are:

- overseeing the day-to-day operation of the school's SEND policy
- coordinating provision for children with SEND
- liaising with the relevant Designated Teacher where a looked after pupil has SEND
- advising on the graduated approach to providing SEND support
- advising on the deployment of the school's delegated budget and other resources to meet pupils' needs effectively
- in conjunction with the class teacher, liaising with parents of pupils with SEND
- liaising with early years providers, other schools, educational psychologists, health and social care professionals, and independent or voluntary bodies
- being a key point of contact with external agencies, especially the local authority and its support services
- liaising with potential next providers of education to ensure a pupil and their parents are informed about options and a smooth transition is planned
- working with the head teacher and school governors to ensure that the school meets its responsibilities under the Equality Act (2010) with regard to reasonable adjustments and access arrangements
- ensuring that the school keeps the records of all pupils with SEND up to date.

Facilities for pupils with SEND at the school including facilities which increase/assist access to the school by pupils who are disabled.

- Ramp to the entrances to classrooms.
- Disabled toilet

The school seeks to comply with the 2010 Discrimination and Disability Act.

Part 2: Information about the school's policies for the identification, assessment and provision for all pupils with special educational needs

SEND Funding

The school's SEND provision is funded largely from the school's overall budget and is allocated largely based on individual need. Support is graduated according to needs, priorities, and availability of resources. When it is agreed to place a pupil on the school's SEND register it is because their additional needs are significant, and they require additional support that the school may fund up to an additional £6k. In exceptional cases the school can apply to the LA for top up funding. Pupils who have an Education Health & Care Plan will have an agreed package of support from the Local Authority.

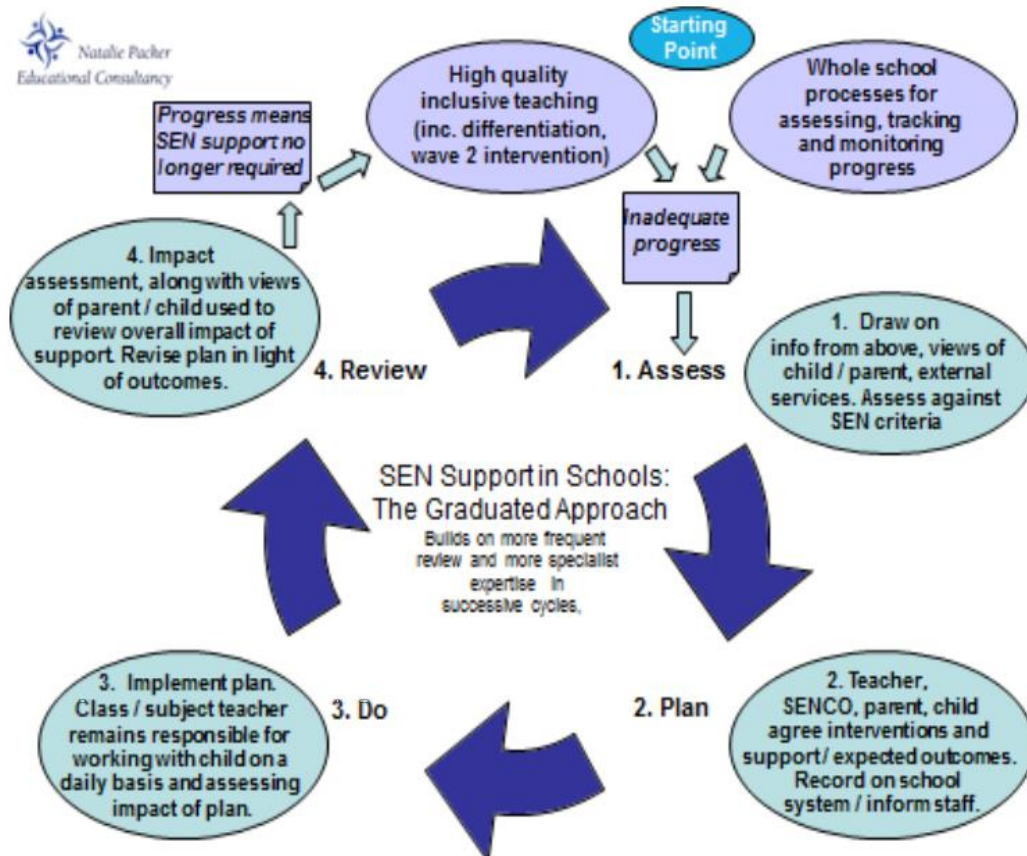
How pupils with special educational needs are identified and their needs determined and reviewed.

All teachers are responsible and accountable for the progress and development of all the pupils in their class, even where pupils access support from teaching assistants or specialist staff. Where a pupil is not making adequate progress, teacher, the SENCO and parents will collaborate on problem-solving, planning support and teaching strategies for individual pupils.

High quality teaching, differentiated for individual pupils, is the first step in our school's response to pupils who have or may have SEND.

The identification of SEND will be built into the school's overall approach to monitoring the progress and development of all pupils.

In line with the 2015 Code of Practice requirements the school will deliver a Graduated Response Model as described in the diagram below for pupils identified as having SEN: (with thanks to Natalie Packer, Natalie Packer Educational Consultancy www.nataliepacker.co.uk/)



Action by class teacher (prior to involvement of the SENCO).

Class teachers will be expected to have undertaken the following actions

- Use existing information as a starting point
- Highlight areas of skills to support in class
- Use baseline assessment to identify what child knows, understands and can do
- Ensure ongoing observation/assessment provides feedback so assessment forms basis of next steps
- Involve parents
- Involve child
- Will not have assumed difficulties are within the child
- Use of National Curriculum programmes of study, effective management, ethos, learning environment and curriculum arrangements
- Differentiation – match planning to individual needs
- Take responsibility for planning and overseeing any interventions or support arrangements to address the child’s learning difficulties.

Arrangements will be monitored to identify those pupils not making sufficient progress with this level of support because of their special needs, at which point the SENCO is consulted, as to whether the pupil should be placed on the school's SEND register.

SEND register

Placing pupils on the school's SEND register

- Will be considered when pupils are unable to make appropriate progress and involves experts advising on a personalised plan, specialist assessment, advice on new strategies, additional support
- Triggers – little progress over time, below age expected outcomes or serious cognition/social & emotional/physical/sensory/communication/ interaction difficulties and where Wave 2 interventions have not made a significant improvement.

The Graduated Response:

Will be led by the class teacher in partnership with the SENCO.

It will commence once it has been demonstrated that high quality teaching and learning, planning, support and interventions are not enabling the pupil to make good enough progress, and where assessment data indicates this is because special educational needs are providing a barrier to learning.

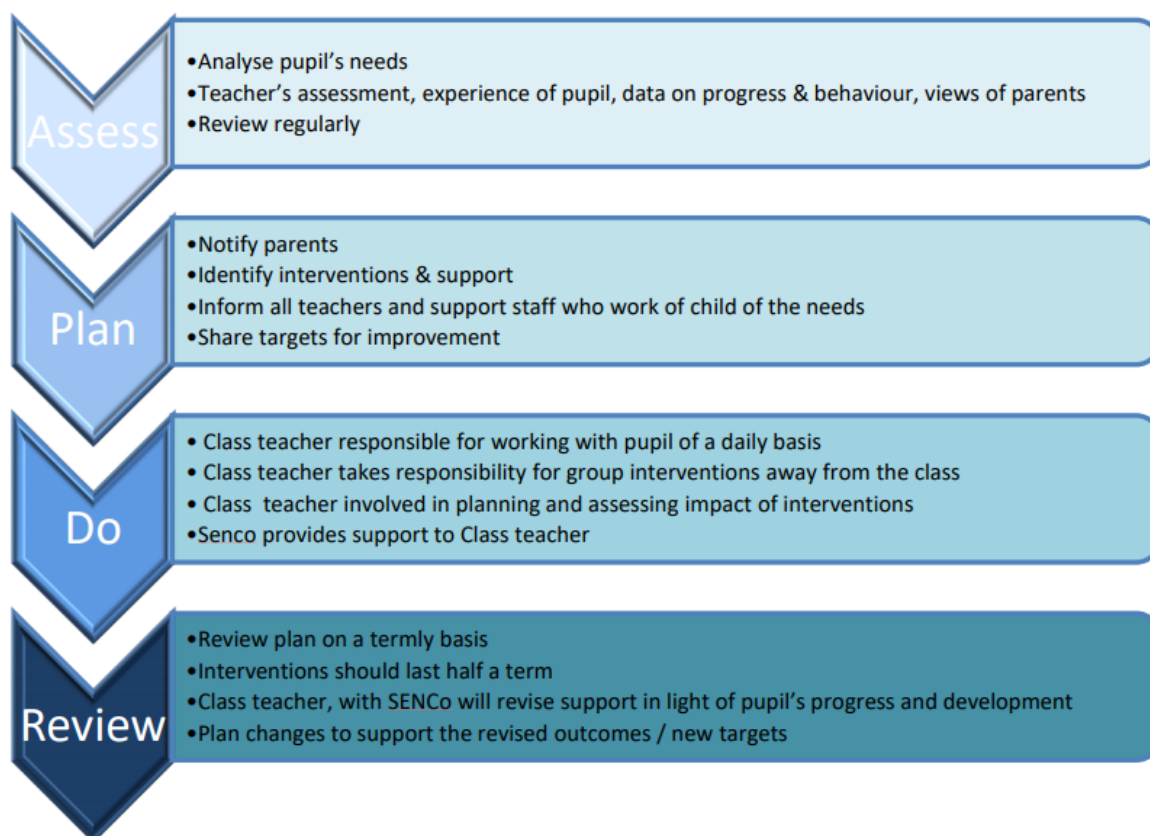
Consideration of whether special educational provision is required should start with the desired outcomes, including the expected progress and attainment and the views and wishes of the pupil and their parents.

The outcomes considered should include those needed to make successful transitions between phases of education and the future.

In consultation with the pupil and parents, a Support Plan will be drawn to achieve the agreed outcomes through support and intervention arrangements.

The Graduated Response plan will ensure that:

- External agencies will be contacted and will see existing records and carry out their own assessments
- SENCO/teacher/ will consider a range of approaches/materials including ICT
- Plans for the use of support will relate to a clear set of expected outcomes, which should include stretching and relevant academic and developmental targets (including for older pupils, and young people, targets around preparing for adulthood).
- Progress towards these outcomes will be tracked and reviewed termly through a 4 step model, and will be repeated as many times as is necessary. (See model below).



The termly review meeting:

This meeting will be led by a teacher with good knowledge and understanding of the child or young person who is aware of their needs and attainment. This will usually be the class teacher, supported by the SENCO. It will provide an opportunity for the parent to share their concerns and, together with the teacher, agree their aspirations for the child.

The school's provision map:

The school will maintain a provision map of the support, arrangements and interventions available to ensure that pupils with SEND can access learning and maximise their achievements.

The School's Approach to Identification and Assessment of SEND

At South Kilworth C of E Primary School we have an agreed approach to the identification and assessment of SEND taking into account the nature of the special needs. Identification includes the use of high quality formative assessment, as well as effective tools and early assessment materials. The main source of outside agency support is from the Local Authority or the school's own commissioned professionals. This could be from the Educational Psychologist, Additional Needs Teachers or Health Professionals e.g. speech and language therapists, physiotherapists etc. Informed parental permission is required before such consultations can take place.

Where pupils do not make sufficient progress, despite the school making purposeful and relevant interventions, it may be appropriate to ask the LA to carry out a statutory assessment of their needs to see if they are eligible for an Educational Health and Care Plan (EHCP). The LA will seek evidence from the school that any strategy or programme implemented for the child in question has been continued for a reasonable period of time without success and that alternatives have been tried. The LA will need information about the pupil's progress over time, and will also need clear documentation in relation to the pupil's special educational needs and any action taken to deal with those needs, including any resources or special arrangements put in place.

In preparing a request the school will involve the parents, pupils and outside agencies and refer to Chapter 8 of the Code of Practice.

Education Health and Care Plans (EHCP)

Once a pupil has an EHCP, the Head teacher of the school will ensure that those teaching or working with the child are aware of their needs and have arrangements in place to meet them. The school will ensure that teachers monitor and review the pupil's progress during the course of a year. Formal reviews of the EHC plan will take place at least annually. If a pupil's needs change, the local authority will be informed and will arrange to hold a review as soon as possible to ensure that provision specified in the EHC plan is appropriate. For further information on EHCPs please see the Local Authority's Local Offer http://www.leics.gov.uk/index/children_families/local_offer.htm.

Access to the National Curriculum. At South Kilworth C of E Primary School, we follow the National Curriculum statement on Inclusion. We expect our teachers to set high expectations for every pupil and aim to teach them the full curriculum, whatever their prior attainment. Teachers will use appropriate assessment to set targets which are deliberately ambitious. Lessons are planned to address potential areas of difficulty and to ensure that there are no barriers to every pupil achieving. In many cases, such planning will mean that our pupils with SEND will be able to study the full national curriculum. Potential areas of difficulty will be identified and addressed at the outset of work.

At South Kilworth C of E Primary School we make every effort to make adaptations to the curriculum, teaching and the learning environment to meet the needs of individual pupils.

How the governing body will evaluate the success of the education which is provided at the school to pupils with special educational needs.

The governing body will ensure that information is available on our website. The information published will be updated annually and any changes to the information occurring during the year will be updated as soon as possible. The information required is set out in the Special Educational Needs and Disability Regulations 2014.

As stated in part 1 the school will monitor and evaluate the working of the SEND policy, gathering information on the following aspects:

- Number of pupils with SEND, expressed as a percentage of the school roll, and any changes to the level of support they receive
- The level of support pupils received and the amount of progress they make
- The 'value-added' data of pupil progress
- The success of resources
- The impact of training and new approaches to meeting needs
- The identification of training needs
- The impact and outcomes of the review process
- The development of pupil participation
- Relationships with parents
- The impact of the statutory process on pupil progress
- The success of involvement of outside agencies
- The success of liaison with other schools.

Arrangements made by the governing body relating to the treatment of complaints from parents of pupils with special educational needs concerning the provision made at the school.

Any complaints from parents of pupils with special education needs concerning the provision made at the school should be made through the school's procedures as set out on the school's website. If you want to complain about your child's SEND support, you should do so while your child is still registered at the school. This includes complaints that the school has not provided the support required by your child's SEND statement or education, health and care (EHC) plan.

To make a complaint, please follow these steps in order (moving on to the next step if your complaint is not resolved):

1. Talk to the school's special educational needs co-ordinator (SENCO) – Miss Lucy Wallis.
2. Follow the school's complaints procedure (located on the school website in the Policies section).
3. Complain to your local authority.

Part 3: Information about the school's staffing policies and partnership with bodies beyond the school Arrangements for Professional Development for all staff in relation to special educational needs

The professional development of all staff involved in meeting the needs of pupils with SEND is ongoing and continuous. A wide range of training opportunities are provided which includes:

- Skill sharing and the demonstration of teaching techniques and strategies organised within the school
- Professional development sessions and one-off sessions on relevant subjects provided by SEND specialists

- Attendance at courses offered by external providers, both accredited and nonaccredited, as part of the school's Performance Management process
 - Other courses which are relevant to the work being undertaken. This can be generated by staff interest or can be undertaken at the request of the SENCO.
- The role played by the parents of pupils with special educational needs. All parents and carers of pupils with special educational needs at South Kilworth C of E Primary School are considered to be our partners. They will be supported to:
- recognise and fulfil their responsibilities as parents and play an active and valued role in their pupil's education
 - have knowledge of their pupil's entitlement within the SEND framework
 - make their views known about how their child is educated
 - have access to information, advice and support during assessment and any related decision-making processes about special educational provision.

To make communications effective staff at South Kilworth C of E Primary School will:

- acknowledge and draw on parental knowledge and expertise in relation to their child
- focus on the pupil's strengths as well as areas of additional need
- recognise the personal and emotional investment of parents and be aware of their feelings
- ensure that parents understand procedures, are aware of how to access support in preparing their contributions, and where possible are given documents to be discussed before meetings
- respect the validity of differing perspectives and seek constructive ways of reconciling different viewpoints
- respect the differing needs parents themselves may have, such as a disability, or communication and linguistic barriers
- recognise the need for flexibility in the timing and structure of meetings

Pupils

The pupil's views will always be ascertained, but this may not be through direct discussion with the pupil. Pupils will be enabled/encouraged to participate in all decision-making processes in education, including the setting of learning targets and contributing to personal plans, discussions about choices of schools, contributions to the assessment of their needs and termly reviews and transition meetings. They need to be part of the process, to know that they are listened to and that their views are valued

Any links with other schools, including special school, and the provision made for the transition of pupils with special educational needs between schools or between the school and the next stage of life or education.

To ensure that the transition process runs smoothly, information will be provided to the next setting. This is coordinated by the SENCO. Transition arrangements for pupils with SEND either moving into the school or moving on to new schools should be set out

This policy will be reviewed and updated annually. The SENCO will also report annually to the Governing Body concerning the effectiveness of the policy.

SENCo contact details: Miss Lucy Wallis (January 2023)

lwallis@lub.learnat.uk